



Labor Tracking

Track the time employees work on specific jobs and production orders.

Seamless integration with the most popular accounting software

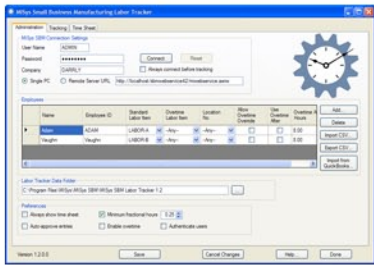
QuickBooks Sage 50 US Edition Sage 50 CA Edition Sage 300 ERP
formerly Sage Peachtree formerly Sage Simply Accounting formerly Sage ERP Accpac

- Basic Manufacturing ● req
- Advanced Purchasing ○ opt
- Advanced Production ○ opt
- Material Requirements Planning ○ opt
- Shop Floor Control ○ opt
- Serial/Lot Tracking ○ opt
- Bin Tracking ○ opt
- Labor Tracking** ● **opt**
- Bar Coding ○ opt
- Custom Reporting ○ opt

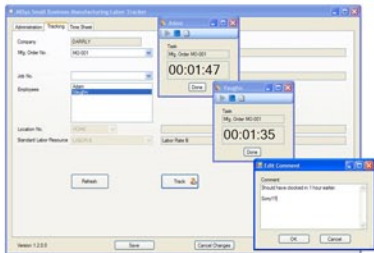
Labor Tracking keeps track of the elapsed time your production workers spend on selected Jobs and Manufacturing Orders. It automatically posts the specified quantity of any labor resourcetype Item to the Job or Manufacturing Order. Labor Tracking may be run on any PC where labor time needs to be recorded and does not require that MISys Manufacturing be installed on that computer.

FUNCTIONALITY

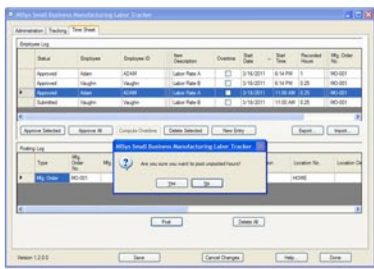
- MISys Labor Tracking communicates directly with the MISys Server module.
- There is no requirement that the MISys Client module be installed on the same computer.
- Connect once to pick up all Resource Items, Locations, Jobs and Mfg. orders for the specified MISys company database.
- Record employee activity from any PC until ready to Post to MISys Manufacturing.
- Set up Resource-type items in Item master to represent various labor rates and related overtime options.
- Charge the cost of the item (labor) to a specified Job or MO.
- Track specific employees at either a specific rate and location, or by any labor rate, or any location.
- Use the timer to record elapsed time for a specified Employee/Labor Item/Location.
- Allows for pauses and for recording comments.
- Establish alternative items (labor rates) to automatically switch to overtime rates after a specified number of timed hours.
- Operate manually as an alternative.
- Retain option of manually approving time sheet entries by switching off Auto-approve option.
- Post Time Sheet entries, two options:
 - Dispense a resource item (labor) from a Location against a specified Job, OR
 - Dispenses a resource item (labor) from the material details of the specified MO. If material details do not include the Item, it will be added automatically.
- Archive Time Sheet entries in a date-named data file.
- Export or Import Time Sheet entries to or from an external file.



Set up all employees with labor rates, overtime rules, ID Codes, and more



Run multiple employee timers simultaneously



Supervisors manage and approve timesheets, results post to MISys

INCLUDED



12 Months Maintenance



SureStart Coach



60-Day Money Back Guarantee

Manufacturing Information Systems, Inc.
 4 Maxham Meadow Way, Suite 2G
 Woodstock, VT 05091
 (802) 457-4600
 sales@misysinc.com

Take the 6-Step Tour
misysinc.com